

OPNsense = Installation

Installation d'OPNsense

Démarrer la VM OPNsense et attendre l'écran de connexion.

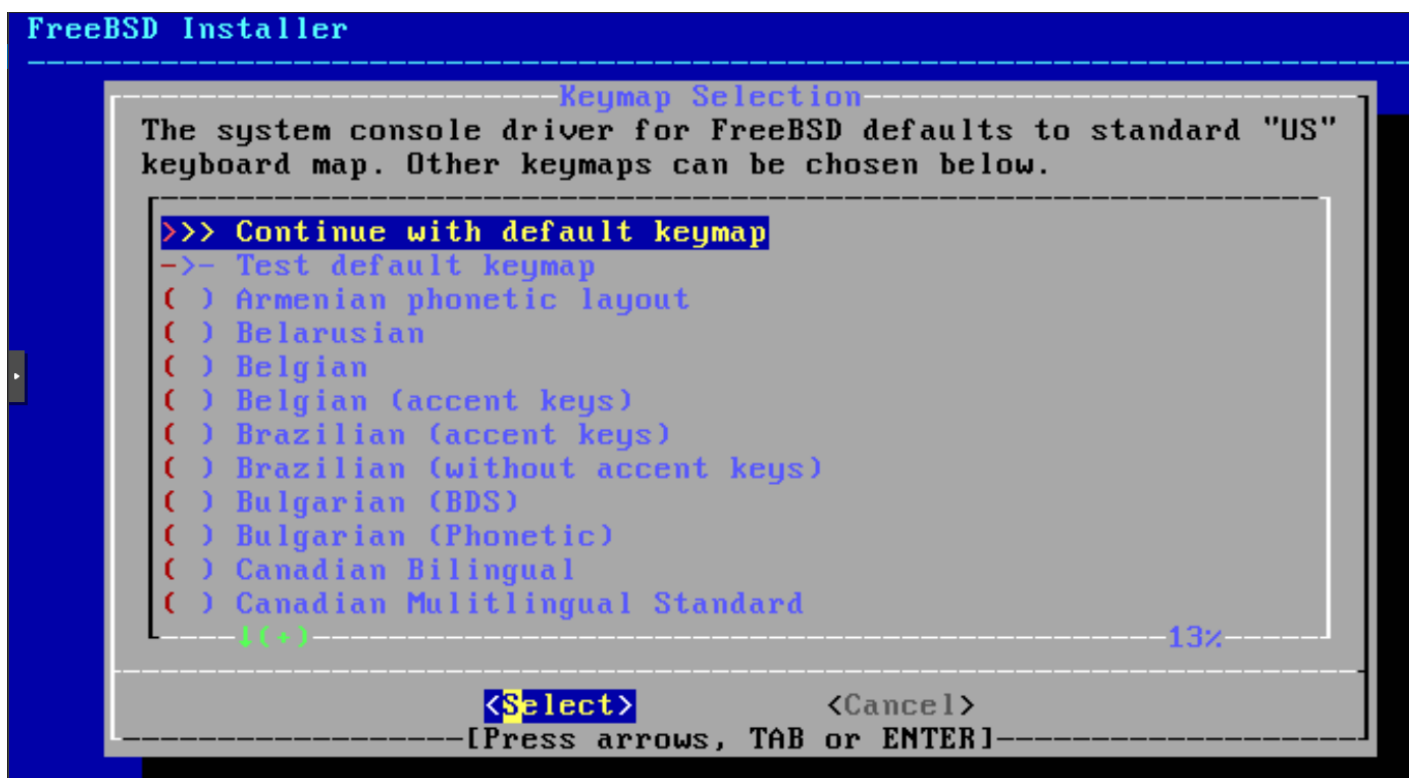
(console avec demande de login root)

Se connecter avec

login : installer

MDP : opnsense

Choisir la langue du clavier.



Sélectionner Install ZFS.

OPNsense Installer

OPNsense 26.1

Choose one of the following tasks to perform.

Install (ZFS)	ZFS GPT/UEFI Hybrid
Install (UFS)	UFS GPT/UEFI Hybrid
Other Modes >>	Extended Installation
Import Config	Load Configuration
Password Reset	Recover Installation
Force Reboot	Reboot System
Force Halt	Power Down System

< **DK** > < Exit >

Choisir sans RAID puis le disque.

FreeBSD Installer

ZFS Configuration

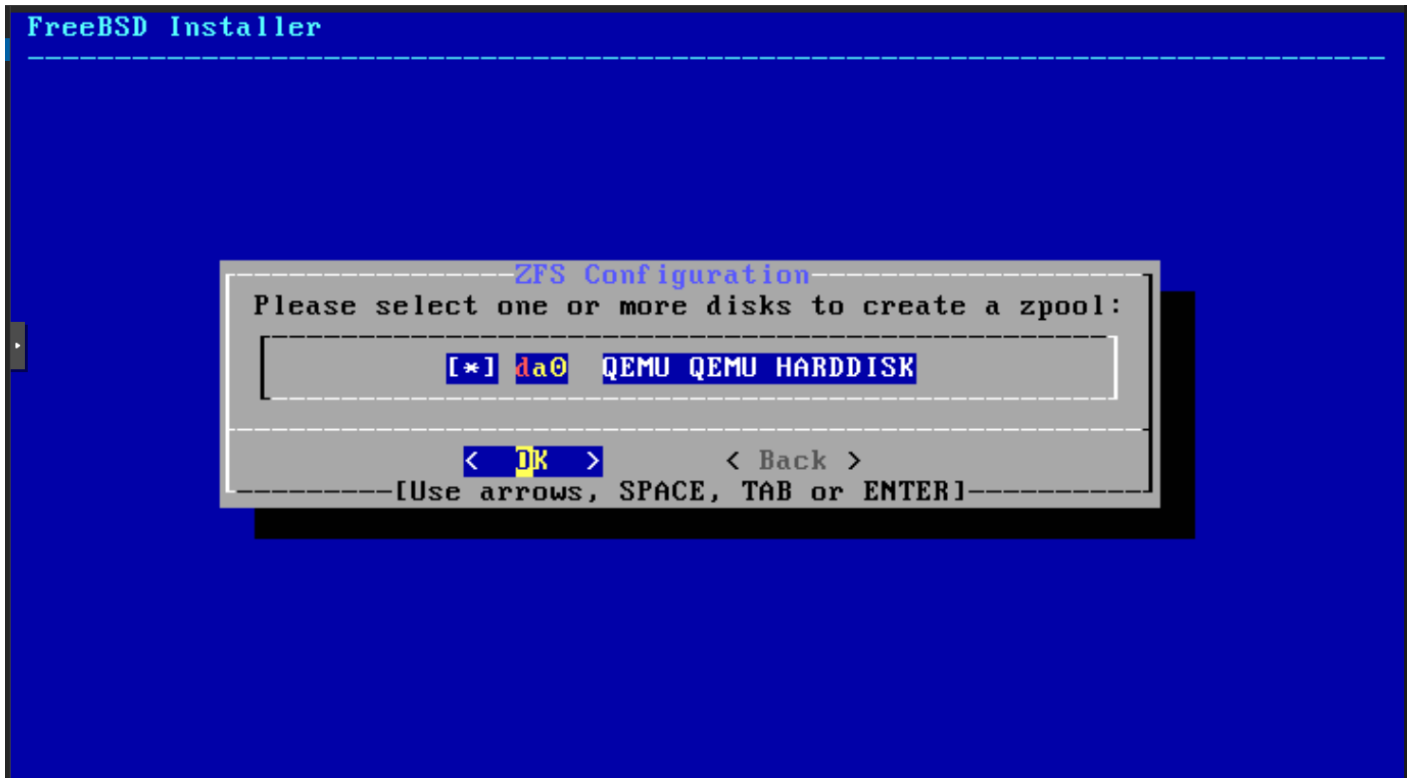
Select Virtual Device type:

stripe	Stripe - No Redundancy
mirror	Mirror - n-Way Mirroring
raid10	RAID 1+0 - n x 2-Way Mirrors
raidz1	RAID-Z1 - Single Redundant RAID
raidz2	RAID-Z2 - Double Redundant RAID
raidz3	RAID-Z3 - Triple Redundant RAID

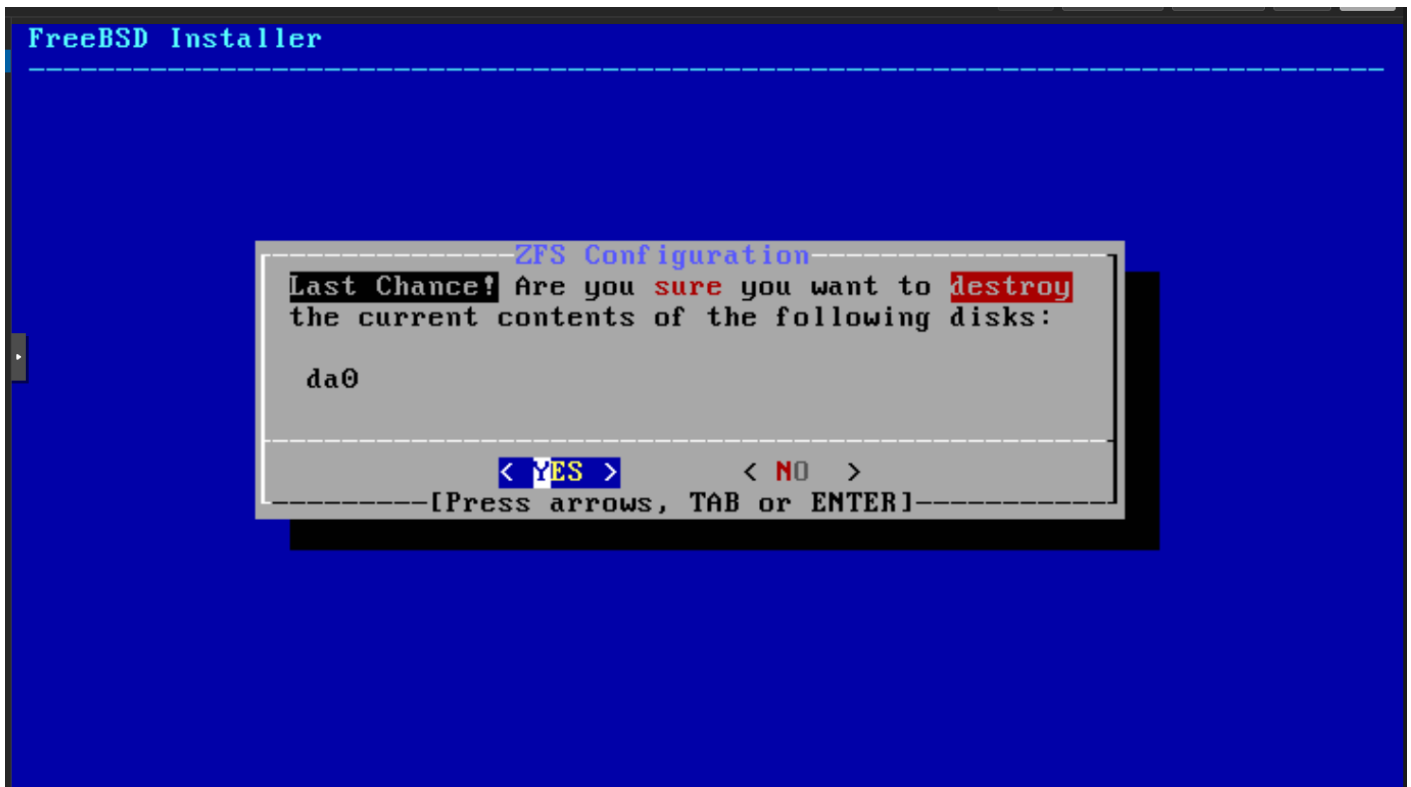
< **DK** > <Cancel>

[Press arrows, TAB or ENTER]

[1+ Disks] Striping provides maximum storage but no redundancy



Lancer l'installation.



OPNsense Installer

Installation Progress

Cloning current system [1%]

Overall Progress 0%

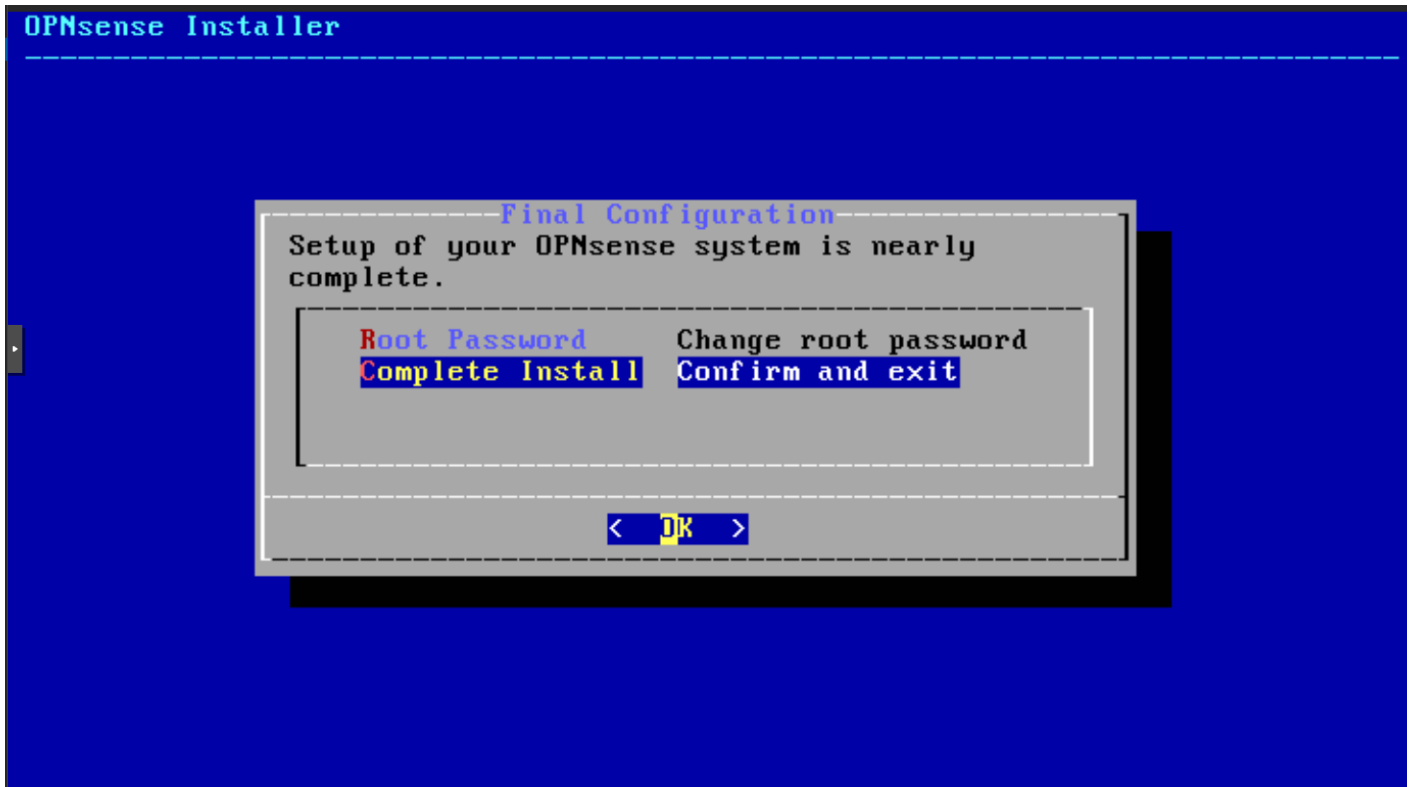
OPNsense Installer

Installation Complete

The system may boot back into the installation media when not ejected properly.

Reboot now	Reboot system
Halt now	Power down system

< OK >



(écran choix disque et progression installation)

Changer le mot de passe root en caribou.

Terminer puis redémarrer.

Revision #7

Created 2026-03-23 15:45:24 UTC by Admin

Updated 2026-03-25 11:20:35 UTC by Admin